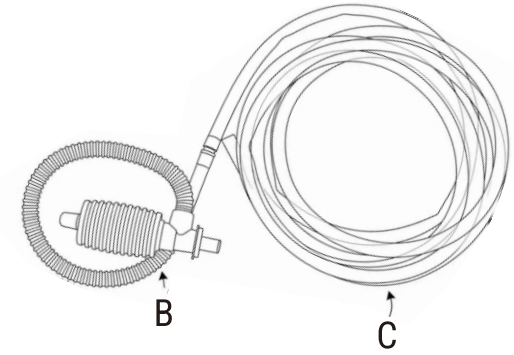
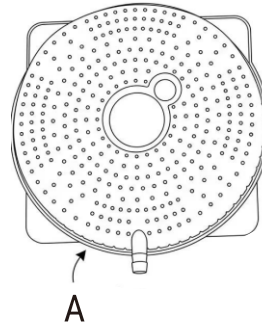
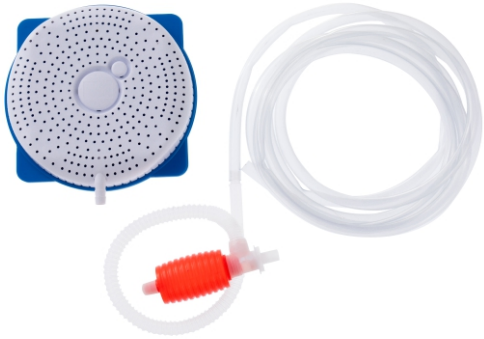


In The Box:



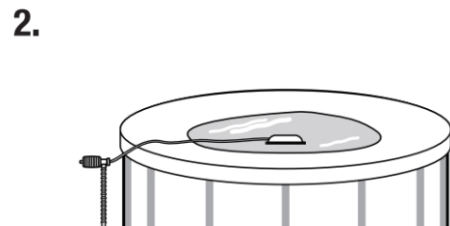
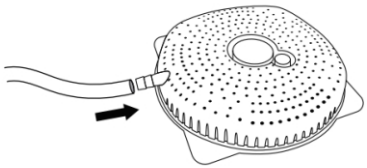
- A. Weighted Drainage Base(x1)
- B. High-Flow Siphon Pump(x1)
- C. 15ft Flexible Drain Hose(x1)

Pool Cover Siphon Drain Kit User Manual

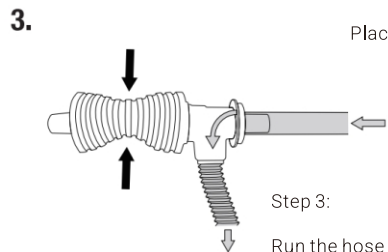
Water Removal System | Non-Electric & Eco-Friendly

Quick Setup Guide:

- 1.** Step 1: Secure the clear hose to the weighted base and the siphon pump at the opposite end.



- Step 2: Place the base at the deepest part of the pool cover. Ensure it's fully submerged.



- Step 3: Run the hose to the ground. Squeeze the pump several times to start automatic drainage.

Expert Tips

Problem	Solution
Water stops flowing?	Check if the discharge end is lower than the pool water level.
Air bubbles in tube?	Repump a few times to purge air and restore the vacuum seal.



Stiff Hose in Cold Weather?

If the hose is rigid due to low temperatures, soak it in warm water (40°C-50°C) for 5-10 minutes. It will become flexible and easy to uncoil instantly.